

Customer :

customer

Customer part :

customer part

Comment :

Comment

S1=8.28

S2=8.93

Tmax=449

Tp S2=488.0

PI=0.48

HI=121

Sample =1781.80

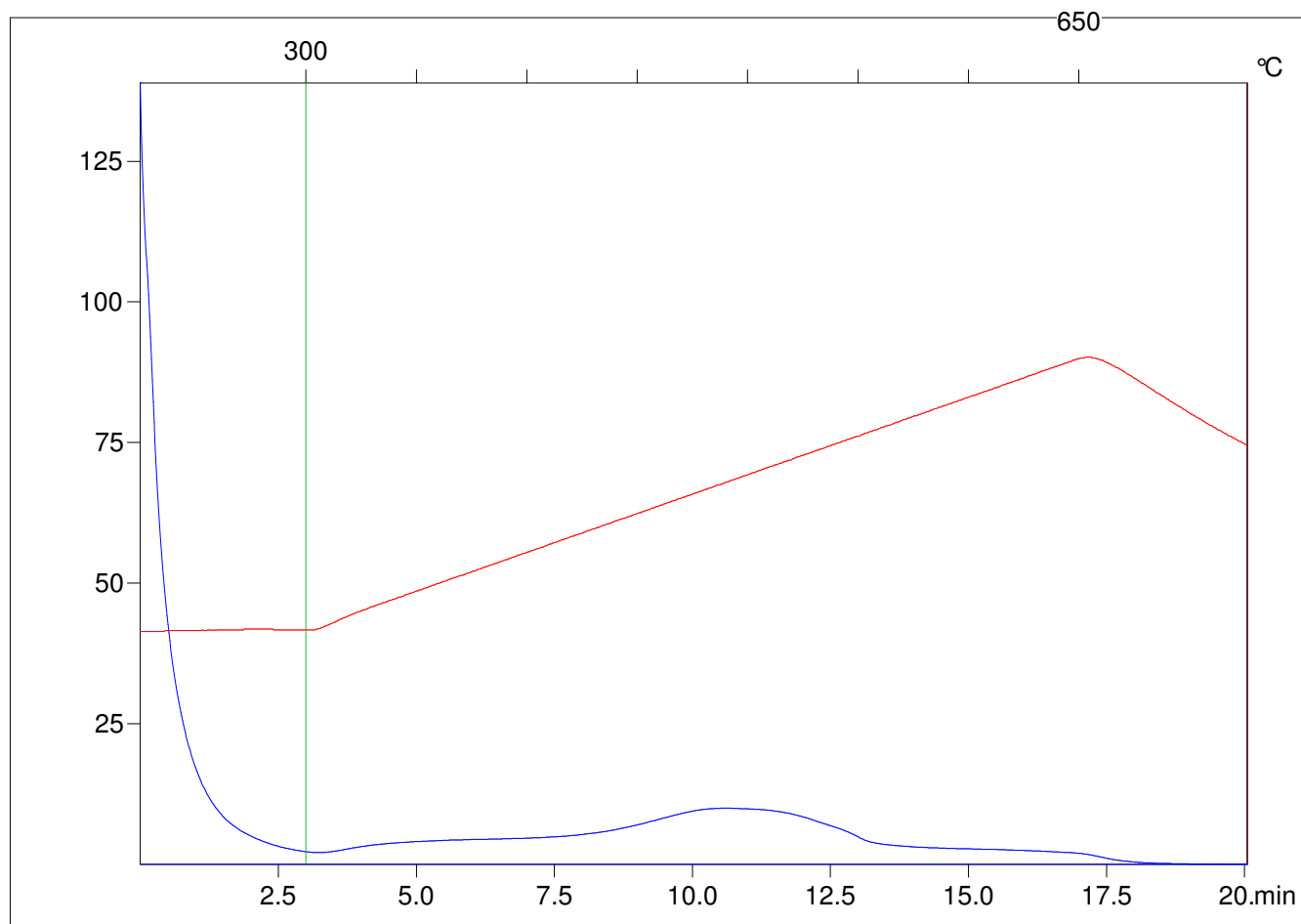
Method =Bulk Rock

Cycle=Basic

KFID(10*9)=1444

Qty =70.4

TOC=7.37



C:\VINC\PK3_1792\PK069.R00 : FID pyrolysis graphic

State Ok

Pyro Status Negative value

Oxi Status Negative value